

THE BROADSIDE

VOLUME I, No. 17

Cambridge, Massachusetts

October 19, 1962

SOMETHING NEW FROM OSCAR BRAND

The Ballad Mongers

by Oscar Brand

Publishers: Funk and Wagnalls

Price: \$4.50

After a stilted forward by Agnes de Mille, Oscar Brand's new book, THE BALLAD MONGERS, makes a commendable effort at covering the history, goods, evils, and enigmas of recent folk music in the United States. Brand notes that an amazing variety of controversies have evolved from the popular recognition of folk music, which began more than 25 years ago. Examples (concrete variety): How have certain singers influenced the urban folk scene? Who gets the royalties from traditional material? Examples (abstract variety): What is a folk singer? What is a folk song?.

One of the Author's major contentions is that any song with "the simple sound usually associated with traditional music" can be called a folk song. Scholars and purists may disagree violently, but in an environment where songs are spread by mass communications, concerts by professional performers of folk music can occur anywhere, and music publishers ask for "songs that everybody thinks he's heard before" such a loose and admittedly subjective definition can not be brusquely brushed aside. No doubt this definition is the result of Brand's many years as a folk entertainer with large and varied audiences. But it is true that songs "that say something" are quickly transmitted. Songs that sound traditional may well be someday. And traditional songs are constantly being translated into contemporary terms. *cont. page 2...*

HEDY WEST IN BOSTON

Two local Coffee houses will present Hedy West to their patrons this weekend. Hedy will appear at the CAFE YANA on Friday and Saturday night, October 19th and 20th and at CLUB 47 on Sunday and Monday the 21st and 22nd. She has been highly praised by both the Little Sandy Review (rather uncommon), and by the New York Times.

SLEEPY JOHN ESTES TO OPEN MUSIC OF AMERICA SEASON

ELIOT House of Harvard has announced that their fine series of musical programs will resume this month with one of America's most famous and most important performers, SLEEPY JOHN ESTES, accompanied on the harmonica by HAMMY NIXON. Long thought to be either dead or too old to play by most blues researchers, Sleepy John was rediscovered early this year by Bob Koester and is in finer form now than ever before.

The significance of the artistry of Sleepy John lies in his style. He provided an approach to blues singing which influenced the whole idiom and the modern country blues which we are so familiar with owe a great deal to him.

Noted folklorist, Archie Green, has stated of Sleepy John "He is a John Faulkner, telling of the everyday life of a small Southern Community" in describing John's ability to write exceptional songs about the people and places of his Brownsville, Tennessee home.

Hammy Nixon, who will accompany Sleepy John is perhaps the finest recorded blues harmonica player and will do things with his instrument that will leave you open-mouthed in wonder.

This is a concert not to be missed.

TONY SALETAN JOINS JAMES BALDWIN AT MIT "CORE" MEETING

On Thursday, October 25th at 8:00 PM, the MIT Civil Rights Committee will sponsor a program for CORE, the Committee on Racial Equality with James Baldwin, well known author as lecturer and Tony Saletan, Boston's internationally known folk singer. The meeting will be held in Building 26, Room 100 (Physics lecture hall) and is open to the public.



However, although the author can hardly afford to deplore the popularization of folk music, he is certainly not in favor of its bowdlerization. He also attacks official censorship, blacklisting and the automatic association of folk music with "beatniks". He "knows whereof he speaks". He has been a folk singer, and associated with other folk singers for many years. He has been censored. He has been blacklisted (by both sides!) He has collected songs and rewritten material for Tin Pan Alley. His forthright opinions are based on a great deal of interesting experience, and his casual authority and vigorously entertaining style make this book most enjoyable.



RAMBLIN' ROUND with DAVE WILSON

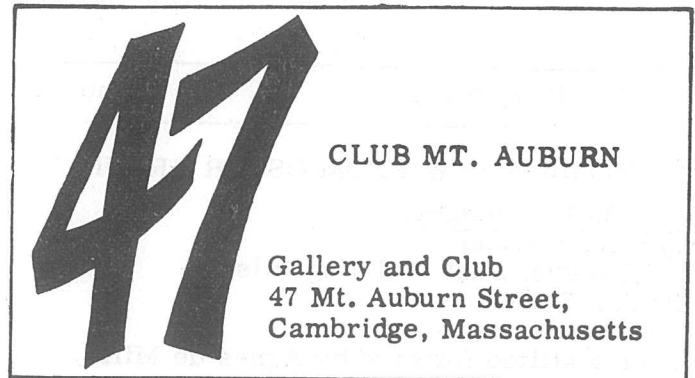
What a way to begin a column series! Last time we made an error that deserves the jeering that Phil Spiro of WTBS has been giving us. We were critical of the notes on an album entitled "Almoft Authentic Folk Songf" and attributed then to one Bud Kinsmen. Actually the notes are by Bud Freeman and are more in the nature of a spoof of both sides in this commercial vs. pure controversy. The album is worth a listen because it pokes fun at both of us.

A recent letter from Harry Oster informs us that a recording featuring Sylvia Mars with Mitch Greenhill and Gordie Edwards all local favorites will be released within the next month or so. I was present at the last recording session of Sylvia's and say enthusiastically that it was one of the finest musical experiences that I have had. The album should be well received.

Guitar Nubbit has another single 45 recorded and due to be released soon, and an LP in the can.

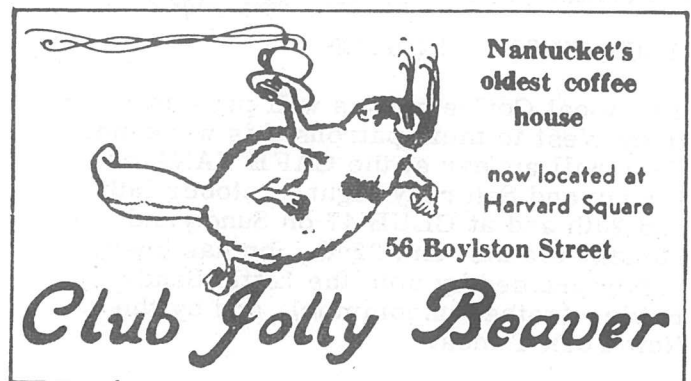
Early Byrd of WILD tells us he might produce a Gospel Festival next Spring, probably in a stadium here in Boston.

Also, a recent letter from Gordie mentioned that Rolf Kahn has started another coffee-house featuring folk music and Debbie Green is playing some fine guitar out there.



CONCERT PROGRAM

- 10/20 Miriam Makeba
John Hancock Hall
- 10/21 Sleepy John Estes
Eliot House: Harvard
- 10/26 Boston Folk Song Society presents
JESSE FULLER, YMCA Hunting-
ton Avenue, Boston.
- 11/2 LIMELIGHTERS, Symphony Hall
(musically competent and witty trio,
- 11/4 Peter Paul and Mary
Doneely Memorial Theatre
Time: 2:15 PM
- 11/4 Tommy Makem and the Clancy
Brothers, Donelly Memorial
- 11/10 New Lost City Ramblers
Jackie Washington
Bonnie Dobson
at Jordan Hall
- 11/16 Moonshiners
Jordan Hall



BROADSIDE

VOLUME I, No. 17
96 Columbia Street
Cambridge, Massachusetts

October 19, 1962

Phone: KISKIDI
All Rights Reserved
A Bi-Weekly Publication

Publisher and Editor	Dave Wilson
Associate Editor	Jill Henderson
Artist	Sonya Loeb
Layout	Barry D. Waldman
Advertising	Chuck Scheffreen
Subscriptions	Ruth Saloman

WILL YOU SUPPORT BROADSIDE....?

We have heard enough hard luck stories in our time to refrain from inflicting our readers with ours. When we first started publishing BROADSIDE we hoped that we might be able to meet all our costs through advertisements. So far we have been able to, barely, and while on paper we are a little bit ahead, it is not enough to provide for the cost increase we now face.

We have a few alternatives. We can increase the number of ads per page, and cut down on the news, which we don't want to do, we can keep the printer we have formerly had, but without having any assurance that the issues will be out on time, (the last issue was four days late), or we can put a nominal price on the BROADSIDE and hope you enjoy it enough to spend a dime for it when you see it.

If you support us, we will try to give you as good a publications as we can.

BROADSIDE will appear with a price tag for the first time on the 16th or 30th of November.

Tired?

of plunking those *same* old chords?

**NEW ENGLAND'S LARGEST SELECTION of
MUSIC for CLASSIC & FOLK GUITAR:**

Classical Methods by
Shearer, Roch, Carcassi, Arai, etc.

EXCELLENT Easy Pieces by
Ysa, Appiaze, Pappas, Albeniz, etc.

For the Advancing guitarist
Tarrega, Segovia, Milan, Villa Lobos, etc.

1270 MASSACHUSETTS AVE.
HARVARD SQUARE

Briggs & Briggs

MUSIC * MUSICAL INSTRUMENTS * ACCESSORIES

VOLUNTEERS REQUESTED TO PERFORM

We have received a request from the Mass. Mental Health Center for folk singers who would be willing to go up to the Center on Fernwood Road by Brigham Circle between 8 and 10 PM November 1st. and sing a few songs for the patients. Also, if you have any records, not only folk, that you would be willing to donate to the Hospital, they would be greatly appreciated. Information on either of the above items may be obtained by calling BROADSIDE.

COUNTRY AND WESTERN CONCERTS
IN NORTH ATTLEBORO

Fritz Mulhauser of WHRB-FM has informed us that Ernest Tubb and the Osborne Brothers will appear October 27th, and Slim Whitman and Reno and Smiley will appear November 3rd at Jack Whitchies Sports Arena on Rt. 1 in North Attleboro Mass. (About 10 miles this side of Providence).

ELIOT HOUSE, HARVARD COLLEGE Sunday October 21
At 8:30 P.M. TICKETS \$1.50 At The COOP or At The DOOR

SLEEPY JOHN NEASE HARMONICA GUITAR
MUSIC of AMERICA series² COUNTRY BLUES

... AND COFFEE TOO



Unconfirmed rumor mentions that the CAFE YANA may soon expand by knocking out a wall. With the talent they are bringing into Boston, they may well need the additional room. Hedy West will be there this weekend and next weekend will mark the return to Boston of Buffy St. Marie, who will be remembered by many of the old Vanity patrons. The past few Saturday nights with Bobby Newirth performing have given rise to great many responses of enthusiasm, all on the plus side. They are also featuring Jazz on Sunday afternoons now.

YANA Schedule:

Monday	Hootenany
Tuesday	Jeff Gerber
Wednesday	Bruce Farwell
Thursday	Sally Schoenfeld
Friday	Hedy West
Saturday	
Sunday	(Afternoons) Jazz

COFFEEHOUSE
BOOKSTORE

SUPPLIERS OF
THE TRADE



GAGGIA
SALES & SERVICE

CHEMEX
COFFEEMAKERS

The TURKSHEAD is now being run by Jim Pope, well known Beacon Hiller who, if cajoled properly, has a repertoire of sea stories which will delight for hours. Please don't tell him we told you so.

Featured through the end of this week at the UNICORN is a one man show of Pastels by T. A. Pascal, (open daily from 11 AM to 5 PM). It was so nice to hear the Villagers last Saturday night. Bobsy with her revamped 12 string and Ben with banjo and guitar do a delightful version of "Wynken, Blynken and Nod". We hope we will be seeing them back on the schedule soon.

UNICORN SCHEDULE:

Monday	Ann Kostick and George Josephs
Tuesday	Open Hootenany
Wednesday	Jackie Washington
Thursday	Tripjack Trio
Friday	David Greenberg and Ann Kostick
Saturday	Hoot of selected performers

A familiar red head at the LOFT is no longer visible, as a Corporation has lifted the burden from his back and allowed him to retire. We doubt he will last long in retirement. However, the service at the LOFT will continue its fine course and will remain a favorite of all its enthusiastic patrons.

RECORDINGS of YOUR
FAVORITE FEMALE FOLK **JOAN BAEZ**
and your **FAVORITE MALE FOLK** **TOM RUSH**
NOW AVAILABLE AT YOUR
FAVORITE FOLK STORE

Briggs & Briggs

1270 MASSACHUSETTS AVE. HARVARD SQ.

CHOMONDELEY's on the Brandeis Campus is back in full swing with promise of some fine entertainment. Ted Alevizos (remember we never spelled your name right Ted?) will perform for coffeehouse patrons for the first time in over six months this weekend, and Jesse Fuller will be there the following weekend. That, we must say, is a pretty impressive way to start a season.

10/19	Jazz Concert (Leonard Popkin Trio)
10/20	Ted Alevizos
10/25	Ionescuds "La Lecon"
10/26	directed by Ira Rosenberg
10/27	Jesse Fuller
11/2	Mike Meeopal - Folksinger
11/3	NY Production of Saul Bellow's "The Wrecker"



THE LOFT
43 Charles St.

Boston, Massachusetts

CAFE YANA

HEDY WEST

50
Brookline
Avenue

October
19
and
20

BUFFY ST. MARIE

October
26 and 27

Not many of the regulars missed attending the first and second episodes of the new "Captain Marvel Meets the Scorpion" Serial. Next issue we will give a synopsis of the first quarter. It's a must for all! Last Sunday, the first Brunch of the season was held and we are sure its success was greatly due to Lana Jokel's Crepe Suzettes with brandy! Next Sunday will be the first Chamber Music Program, and don't miss Jesse Fuller's one night engagement.

CLUB 47 SCHEDULE:

10/19	Keith and Rooney
10/20	Eric Von Schmidt
10/21	Brunch 11-3 PM
	Chamber Music 4 PM
	HEDY WEST and Geoff
	Muldaur 9 - 1 AM
10/22	HEDY WEST and Mitch
10/23	Jackie Washington
10/24	Tom Rush
10/25	CRVB's and guest: Geoff
	Muldaur
10/26	Keith and Rooney
10/27	Eric Von Schmidt
10/28	Brunch 11-3 PM
	Chamber Music 4 PM
	Folk Music with Zola 9 - 1 AM
10/29	Film: "Jesse James"
	Episode III "Captain Marvel
	Meets the Scorpion"
10/30	Jackie Washington
Hallowe'en	Tom Rush

If Howard Ferguson and/or any of the patrons of the KING's ROOK start looking like slightly used pin cushions, there is no real mystery behind it all. The cause is situated in the rear room where a dart board has been installed and the proprietor has been practising in some all night sessions, determined to become Marblehead's most proficient marksman.

AT THE PRESENT TIME: ALL MARTIN GUITARS ^{now in} ~~stock~~!!
SPECIAL SALE!! FOR MANY YEARS ONE OF THE
 FINEST METAL-STRING FOLK GUITARS **GIBSON LG2**
 SOON TO BE REPLACED BY A NEW MODEL
 NOW - AN EXCELLENT BUY!!
NEW!! OUR "CUSTOM - CRAFT" GUITAR STRINGS
 ADD SILK AND STEEL "SW" GAUGE -
 SOMEWHAT HEAVIER FOR D-28's - J45's - etc.
 OPEN MONDAY to 8:30 P.M.!!
 LOADS OF ACCESSORIES IN STOCK ALL AT
E.U. WURLITZER (inc.)
 76 BEDFORD ST. BOSTON HA6-3897 or 3898

Beseiged from above by Hughes' campaign workers and from the sides by similar establishments to itself, the Beaver manages to keep that everpresent smile intact and to continue to serve the frabjous concoctions we have so often mentioned before. CLUB JOLLY BEAVER remains our favorite "get away from it all" coffeehouse in Cambridge and the wild life there, we are speaking of a dear named Bambi, deserves your attention.

THE FOLKLORE CENTER

~ HARVARD SQUARE ~ BEACON HILL ~

BROWSE AMONGST:

- GIBSON
- GOYA
- MARTIN
- GUILD
- BANJOS
- HARMONICAS
- BOOMBASPOIES
- RECORDERS
- AUTOHARPS
- BALALAIKAS

DULCIMERS
LUTES

ALL ACCESSORIES

HAND
MADE
INSTRUMENTS

DEDICATED TO THE: MAKING OF, DEALING IN,
TRADING, REPAIRING,
TEACHING AND SELLING OF
fine folk-classic GUITARS
BANJOS and all other
instruments.

TRADE-INS
LESSONS

NEW AND USED
TWELVE STRINGS

telephone ~ 491-0190 ~

84

83 MT. AUBURN ST. CAMBRIDGE W. CEDAR ST. BOSTON

SOME RADIO ADDITIONS AND CHANGES

Early Risers can find a half hour of country and western music on WHIL from 6:30 to 7:00 AM.


This is the Blues, w/P. Spiro is aired from 8:00 to 9:00 PM instead of 7:30 PM as announced last issue (WTBS-FM 88.1).

ON THE CAMPUS OF
BRANDEIS UNIVERSITY
WALTHAM, MASS.
Tel. TW4-6000, Ext. 520
Weekdays 9-12 p.m.
Weekends 9-11 AM.

CHOLMONDELEY'S

FEATURING FOLK MUSIC / THEATRE
JAZZ / CLASSICAL MUSIC
ON THE WEEKEND NIGHTS

FASHIONS
FOR
FOLKIES
AT:



carol cravats

the different shop for men

144 NEWBURY AT DARTMOUTH
BOSTON 16, MASS.

New fall fashions...fabulous textures and tones...
traditional for inside and out.

SUBSCRIPTIONS

If you cannot get to any of the places which now distribute BROADSIDE, we are now offering you the chance to subscribe. For the outrageous sum of \$2.00 we will mail you your very own copy of each issue. Many back issues are still available to those who request them. There is a possibility pending of charging a nominal price for each issue. If this publication does acquire a price tag, subscribers will continue to receive their issues at no extra charge. Mail check or money order to BROADSIDE, 96 Columbia Street, Cambridge, Mass

CLASSIFIED ADS

JEFF MULDAUR will accept a limited number of guitar students who are interested in learning unique blues techniques.

Phone: KISKIDI



SUBSCRIPTION BLANK

BROADSIDE
96 COLUMBIA STREET
CAMBRIDGE MASSACHUSETTS

Please enter my name as a subscriber. I am enclosing \$2.00 check () money order () for 1 year (26 issues).

Name _____
Address _____

